

Egypt national Observatory for Women

WWW.enow.gov.eg



May 2024

Egypt national Observatory for Women

WWW.enow.gov.eg



May 2024



Work Team

Dr.Magued Osman

Professor of Statistics at the Faculty of Economics and
Political Science, Cairo University
Baseera CEO

Dr.Hanan Girgis

Baseera Executive Vice President

Eng.Fatma Ramadan

IT Manager

Mrs.Gihad Mahmoud

Senior Statistician Researcher



Contents

1- Introduction	1
2- Why was the Egypt National Observatory for Women established?	2
3- Partners	4
4- Organizational structure and work cycle	6
5- Contents of the observatory	9
6- Research activities that took place under the umbrella of the observatory	17
7- Data sources	19
8- Beneficiaries of the observatory	20
9- Regional Cooperation	24
9- Challenges	26
10- Opportunities	27
11- Next steps	29
Appendix: Stages of establishing the Egypt National Observatory for Women website	32



1- Introduction

The Egypt National Strategy for Women Empowerment 2030 launched in 2016 is based on four pillars: Political Empowerment and Leadership, Economic Empowerment, Social Empowerment, and Protection. Each pillar includes a main goal and a number of sub-goals, in addition to a set of indicators to measure impact. A quantitative target was also set for each indicator to be achieved by 2030.

Commitment to a number of factors is necessary in order for the strategy to succeed. The most important factor is the periodic monitoring and evaluation process of interventions which aims to ensure the strategy is implemented in a way that helps achieve the aforementioned goals. Consistent monitoring is also intended to redirect plans and programs carried out by the main stakeholders if need be to achieved desired outcomes. Monitoring and evaluation processes also contribute to identifying the challenges facing the implementation of the strategy to develop optimal solutions to overcome them.

Accordingly, it was mandatory to establish an independent mechanism for follow-up and evaluation so as to ensure its neutrality and transparency. In 2017, the Egypt National Observatory for Women (ENOW) was launched to serve this purpose. The Observatory is one of the important information observatories in Egypt and the world, as it also presents vision and policies that stimulate the process of empowering women in Egypt and helps decision-makers reach evidence-based



decisions. The website of [Egypt National Observatory for Women](#) is the platform on which the Observatory's studies and indicators are published.

2- Why was “Egypt National Observatory for Women” established?

After the launch of Egypt National Strategy for Women's Empowerment 2030, and with the urgent need for a mechanism to monitor the implementation of the strategy, the Egyptian Center for Public Opinion Research (Baseera) proposed the idea of establishing the “Egypt National Observatory for Women.” The initial idea of the observatory included monitoring indicators for following up on the implementation of the four pillars of the national strategy for women's empowerment based on available data. The Observatory's purpose then expanded to include bridging the data gap related to the empowerment of Egyptian women, especially that data related to values and social norms, through surveys and opinion polls.

In the context of Egypt's interest in implementing the Sustainable Development Goals (SDGs), and given that there was no mechanism to follow up on their implementation, a number of experts suggested including indicators of the SDGs in the observatory, especially those related to women.

Accordingly, the Egypt National Observatory for Women is classified as an information observatory that relies on data from various reliable sources and uses published and peer-reviewed methodologies.



This observatory has many unique features:

- Egypt National Observatory for Women is managed by Baseera Center, which is an independent center with no political affiliations. This ensures the Observatory's independence, transparency, and impartiality in monitoring and evaluating efforts to empower Egyptian women.
- The Observatory focuses on providing the data and indicators required to monitor and evaluate the implementation of Egypt National Strategy for Women Empowerment 2030, which is one of the critical success factors for the strategy.
- ENOW works at the national and local levels (urban governorates, Lower Egypt, Upper Egypt, border governorates).
- The Observatory works to bridge the information gap related to the empowerment of Egyptian women by conducting surveys and opinion polls based on standardized methodologies.

Data is the fuel that drives innovation Through data analysis, the Egyptian Women Observatory provides new and innovative insights that contribute to developing customized solutions to the challenges facing Egyptian women. This partnership between data and innovation is key to achieving tangible progress in the field of gender equality.

Dr. Hala El-Saeed
President's Advisor for
Economic Development



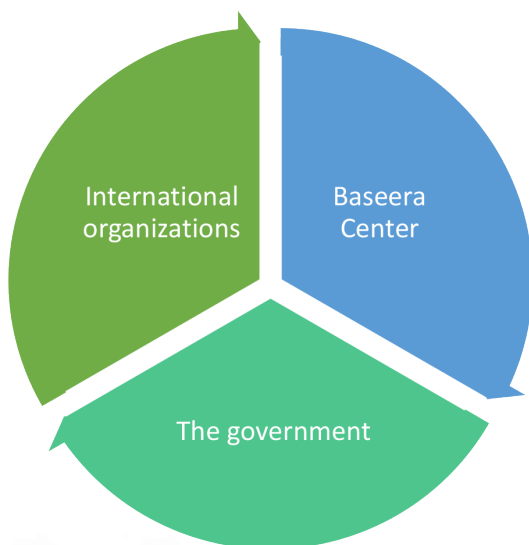
- The Egypt National Observatory for Women plays an unprecedented role in the quantitative measuring of social norms related to women's empowerment through new methodologies, the most important of which is the "Women Empowerment Social Norms Index".
- The Observatory relies on technology to provide and display data. Examples of this include employing the mobile phone application "Nes2alak" to collect data, as well as relying on advanced methods for graphical display of indicators.
- ENOW plays an active role in disseminating data and indicators and uses innovative tools in this regard, including the "Number of the Day" service, which is an information service provided by Baseera Center to more than 50,000 subscribers through email, SMS, and WhatsApp messages.
- The role of the Observatory is not limited to providing data and indicators, but rather extends to preparing policy papers and policy capsules that help decision-makers develop policies and interventions that will improve the situation of Egyptian women.

3- Partners

The Egypt National Observatory for Women is a distinguished model of partnership between governmental authorities, international institutions, and the private sector as follows:



- The Observatory is managed by Baseera Center, which is an independent private center that works to provide research services with high quality, transparency and credibility.
- The Observatory was funded by international organizations concerned with the empowerment of women. The establishment of ENOW began with funding from UN Women, and then the World Bank contributed to financing research activities for monitoring and updating the Observatory over a period of six years.
- For many indicators, the Observatory relies on data available from the Central Agency for Public Mobilization and Statistics - which is a major partner with the data it provides - as well as data available from various ministries.





4- Organizational structure and work cycle

• Advisory Committee

The Advisory Committee develops the general strategy of the Observatory and defines its objectives. The committee includes the President of the National Council for Women, the CEO of Baseera Center, and a member of an international organization that works in the field of women's empowerment in Egypt.

• The Observatory Manager

The manager of ENOW undertakes the task of implementing the strategic objectives of the Observatory, setting detailed objectives, work plans and methodologies. The manager is responsible for the technical and administrative supervision of the implementation of research conducted under the umbrella of the Observatory.

• Experts and Researchers

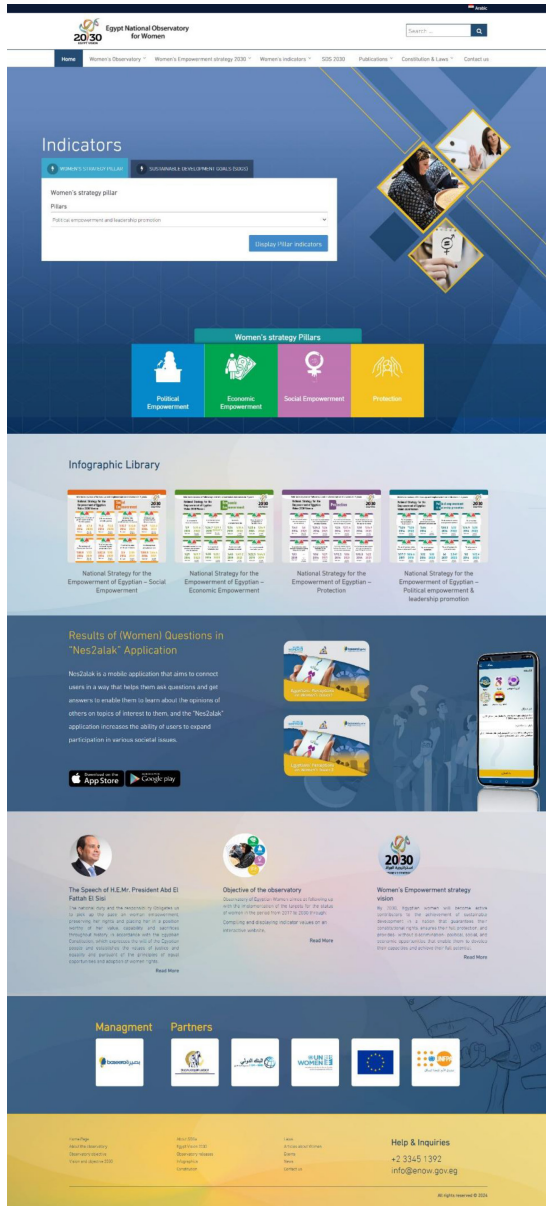
The Observatory includes a number of experts and researchers in the fields of statistics, economics, and gender. This team works to collect and calculate indicators from various sources, document indicators in addition to analyzing the data of the surveys and opinion polls conducted under the umbrella of the Observatory. These experts also participate in preparing policy papers.



The Observatory also has a list of important experts in various fields such as political science, sociology, psychology, geography, health, education and other specializations related to women's empowerment. These experts participate in developing theoretical frameworks of the studies conducted by the Observatory, in addition to participating in the preparation of reports and policy papers produced by ENOW.

• **Programmers and Designers**

The Observatory's team includes a number of programmers who built the ENOW website in its early stages, and they also develop and update it whenever needed. The team also includes graphic designers who work on the Observatory's infographics.





5- Content of the observatory

The Egypt National Observatory for Women portal includes key data, studies, laws, and events related to women's empowerment. The Observatory displays its content in both Arabic and English.

The Observatory includes several pages as follows:

▪ Home page

The Egypt National Observatory for Women portal contains in its main window at the top right of the page a search icon (search engine), which helps in searching using any keyword on all pages of the site. The Observatory also allows, through an icon at the top right of the home page, navigation between the English and Arabic languages.

- The Observatory includes on its home page a special drop-down list of indicators of the pillars of the Egypt national strategy for women empowerment, called “Women’s Strategy Pillars,” which includes four pillars:

255 indicators

10 surveys and
telephone polls

34 reports and policy
papers

3 policy capsules

26 infographics



- Political empowerment and leadership
- Economic empowerment
- Social empowerment
- Protection

The indicators of the four pillars can be accessed through the icons at the bottom of the home page.

Access to ENOW

49 thousand visits

213 thousand pages

450 thousand files

There is another adjacent drop-down list called “Sustainable Development Goals”, which includes two drop-down lists, the first for the 17 general or main goals, and the second is for the sub-goals. The sub-goals are sorted according to the main goal in the SDGs list, and after selecting the sub-goal and clicking on the icon. “View indicators” shows the indicators values.

Given that the National Strategy for Women’s Empowerment is concerned with achieving justice between males and females, the Observatory makes data available by gender.

■ Women’s Observatory

The second menu, adjacent to the main page menu, is the “Women’s Observatory” menu. It includes two submenus, “About the Observatory” and “The Purpose of the Observatory.” The “About the Observatory” menu includes a map of the Observatory



so the user can understand all its contents. The “Objective of the Observatory” list displays the objective during the period from 2017 to 2030.

■ **Women’s Strategy 2030**

This list displays the content of Egypt National Strategy for Women Empowerment 2030.

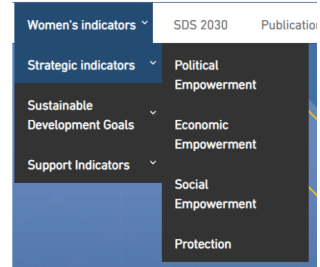
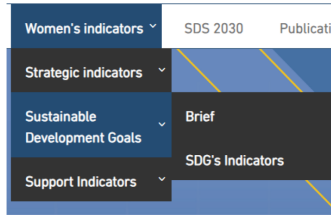
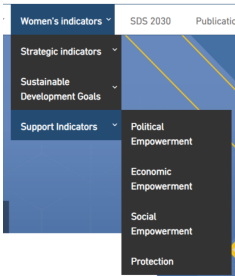
This list includes two sub-drop-down lists: “Vision and Goal” and “Strategy Pillars”, the latter consisting of four basic axes.

■ **Women’s indicators**

This list includes three sub-menus: “Strategy Indicators”, “Sustainable Development Goals” and “Supporting Indicators”. The three sub-menus include different menus that reflect more details about the topics referred to. The lists are divided as shown in the following images:

An independent mechanism for follow-up and evaluation ensures accountability, objectivity, and progress in women's empowerment initiatives. The Egypt Women Observatory is pivotal in identifying gaps, analyzing trends, and setting priorities, enabling targeted actions that address women's needs effectively. It enhances evidence-based decision-making and fosters sustainable progress toward gender equality in Egypt.

**Dina Kafafi, Chief of Party
USAID Women's Economic
and Social Empowerment
Program Pathfinder
International**



- The "List of strategy indicators" presents the indicators for monitoring and evaluating the Egypt National Strategy for Women Empowerment 2030, and their time series since the launch of the strategy until the last year available for the indicator.
- The "List of Sustainable Development Goals Indicators" displays indicators for the SDGs.
- The "List of supporting indicators" presents a number of indicators that are not included in the indicators of the Egypt National Strategy for Women Empowerment, but have a direct or indirect impact on the empowerment of Egyptian women.

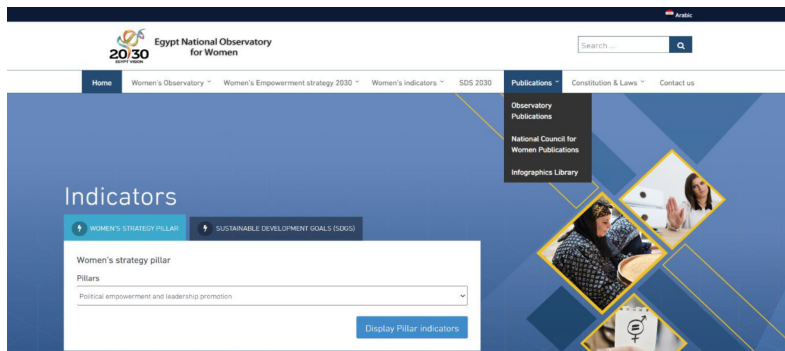
■ Egypt Vision 2030

This main menu does not contain drop-down sub-menus, as you can directly access the content of its page, as it displays the content of Egypt's Vision 2030. The page also contains a PDF file for downloading Egypt's Vision for viewing.



■ Publications

This main menu contains four submenus:



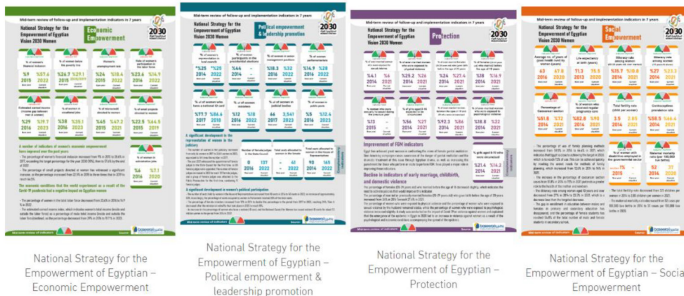
- “Observatory publications” include all reports and policy papers that were produced under the umbrella of Egypt National Observatory for Women,
- “Publications of the National Council for Women” list includes some publications of the National Council for Women related to the strategy topics,
- The “Infographic Library” list includes a summary of the results of reports issued and opinion polls conducted under the umbrella of the Observatory, presented in an attractive way that is easy to understand for non-specialists, as the data is presented in the form of infographics with numbers and percentages.
- Other parties’ publications: This list includes any publications other than the Observatory and NCW publications.



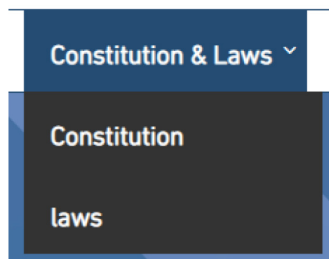
All publications available on the Observatory's website can be downloaded through a PDF file at the bottom of the page.

[Home Page](#) > [Publications](#) > [Infographics library](#)

Infographics library



■ The Constitution and laws

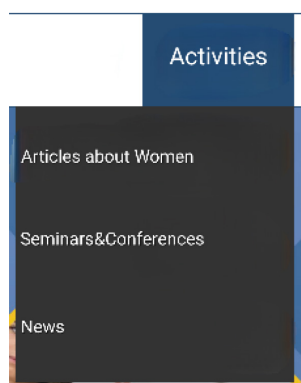


This main list contains two sub-lists: “The Constitution,” which includes the basic reference for achieving equality, justice, and protection in accordance with Article 11 of Egypt’s 2014 Constitution. The second sub-list, “Laws,” includes a statement of the latest legislation issued for the benefit of Egyptian women during the past fifteen years. It includes legislative amendments to the Personal Status Law, legislative amendments to labor laws,



legislative amendments to the Penal Code, and others. At the bottom of this page, you can print and download the documents of laws and legislation issued for the benefit of Egyptian women.

■ Activities



This main menu contains three submenus: “Articles about Women,” “Seminars and Conferences,” and “News.”

- The “Articles about Women” sub-menu list includes a large number of articles about women on various topics that were published in different newspapers and websites, such as Al-Jumhuriya, Al-Youm Al-Sabea, and Al-Shorouk.
- The second submenu, “Seminars and Conferences,” displays seminars and conferences that were held under the umbrella of the Egyptian Women’s Observatory. By clicking on the title of any conference or seminar, the user can view videos and photos of the conference, download presentations, and learn about the media entities that covered the conference.

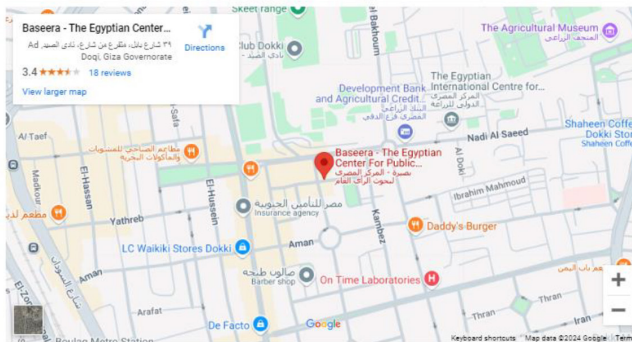


- “News” page includes a large number of news about women empowerment and ENOW.

■ Contact us

This page contains an electronic Google map showing the location of the Egyptian Center for Public Opinion Research (Baseera), which is responsible for managing the observatory, as well as the contact list and addresses of both the National Council for Women and the Egyptian Center for Public Opinion Research (Baseera).

[Home Page](#) > [Contact Us](#)



Address of the National Council for Women

Address: Abdel Razzaq El Sanhoury Street - Off Makram Ebad

Phone: to 65 23490060

Fax: (+202) 23390066

Office of Complaints: 15115

Baseera Address

Address: 39, Babel St., El-Dokki, Giza Governorate, Egypt

Phone: (+202) 33376555

Phone: (+202) 33375558

E-mail: info@baseera.com.eg



6- Research activities that took place under the umbrella of the Observatory

The Observatory conducted a number of research activities, including the following:

▪ Opinion polls and phone surveys

Ten public opinion polls and telephone surveys were conducted under the umbrella of the Observatory, covering several topics, including Egyptians' perceptions regarding women's economic participation, women in leadership positions, women's rights, women's health, living conditions of rural women, the economic and social impact of divorce, and the impact of Covid-19 on violence against women, and social norms affecting women's economic participation.

▪ Policy papers

The policy papers prepared by ENOW provide analysis of some important issues related to women's empowerment, and propose a number of policy recommendations that help decision-makers determine the policies and interventions required to improve the situation of Egyptian women. More than 30 policy papers have been prepared under the umbrella of the Observatory by a number of distinguished experts in various fields.



▪ Policy capsules

The Egypt National Observatory for Women introduced the idea of policy capsules to present specific policies and interventions to decision-makers in no more than 500 words. This publication has been well-received by decision makers because the policy capsule is brief, direct, and relies primarily on statistics.

▪ Reports

The Egypt National Observatory for Women issued a number of important reports, including the “Study on Women’s Economic Empowerment” report, which was prepared by a number of experts with funding from the World Bank, and the “Empowerment of Egyptian Women: After Covid-19” report, Midterm Review Report of the National strategy for women empowerment.

Baseera Center has provided worthwhile and unprecedented research on social norms affecting women’s economic empowerment. Baseera Center always undertakes serious and useful research tasks to enhance knowledge accumulation and to develop and rationalize decision-making.

Dr. Saeed Al-Masry
Professor of Sociology at
the Faculty of Arts, Cairo
University



▪ Quantification of social norms

Egypt National Observatory for Women introduced new methodologies for quantifying social norms, and produced the first index of social norms related to women's economic empowerment in a way that allows tracking the development of these norms over time.

7- Data sources

The Observatory relies on a number of diverse sources of local and global data, including the following:

- Surveys and opinion polls conducted under the umbrella of the Egyptian Women's Observatory. Their number so far reaches 10 surveys and opinion polls.
- Surveys and bulletins issued by the Central Agency for Public Mobilization for Statistics, such as the Economic Census, the Annual Statistical Book, the Population Census, the Egypt Family Health Survey, the Labor Force Survey, the Annual Births and Deaths Bulletin,
- Publications of Egyptian ministries and government bodies,
- Central Bank of Egypt publications,
- Publications of the Central Agency for Organization and Administration,
- Publications of international organizations such as the World Bank and United Nations organizations,



- Global reports such as the Global Gender Gap issued by the World Economic Forum, the Human Development Report, and others.

8- Beneficiaries of the observatory

The Observatory serves many beneficiaries, the most important of which are the following:



■ The National Council for Women

The National Council for Women is the national mechanism concerned with women's issues. The Council aims to achieve the full empowerment of women through various interventions such as working to modernize laws, implementing programs and projects, and coordinating with various partners in the



government, international organizations, and the private sector to provide greater opportunities for Egyptian women. Since the launch of the National Strategy for Women Empowerment 2030, the Council has been working to achieve the goals of this strategy. It also provides data and other indicators related to women's empowerment to measure various issues and phenomena that may have a direct or indirect impact on women's empowerment. In addition, the National Council for Women relies on policy papers and policy capsules prepared under the umbrella of the Observatory to open a dialogue with decision-makers about the policies and interventions required to stimulate women's empowerment in Egypt.

■ **Government officials**

The Observatory provides data that can help government officials formulate policies, plan programs, and monitor and evaluate various interventions. The Observatory also displays a set of policy papers prepared by distinguished experts in their fields to help identify issues that require government intervention. It also provides recommendations and often specifies the type of interventions required and their expected impact.

■ **Parliament**

The Egyptian Parliament is the legislative authority responsible for setting legislation and approving the state's general policy. In this context, Egypt National Observatory for



Women is a source of data and studies that members of Parliament need when preparing draft laws related to women's issues. Moreover, experts working at the Observatory participate in hearings in the House of Representatives when discussing draft laws related to women's issues.

■ Civil society

ENOW provides an opportunity for civil society organizations that work in various fields of development, especially in the field of women's empowerment, as well as for the private sector,

which allocates part of its social responsibility budget to women's empowerment. It provides them with the necessary information

Solutions must be found to ensure the sustainability of the Egyptian Women's Observatory to ensure real change in the status of women. The Observatory is the main reference for everyone working on projects or interventions specific to women. I always use the data and reports available on the observatory before starting to develop any project on women's empowerment because it provides information about the gaps that exist, whether at the geographical level or at the level of different segments of society. Recommendations and policy papers also help in building projects and interventions in a concise and clear manner.

D. Manal Maher Al-Jamil
Executive Director of the
Al Qurrah Association and
former member of the House of
Representatives



to plan their programs and set their goals, as the data available on the Observatory website helps in knowing the needs of Egyptian women, and the development goals of the state, which helps in planning various interventions as well as measuring the impact of interventions that take place at the national or local level by following up on the change in the indicators related to these interventions.

■ **Media**

The Observatory holds workshops and training courses for media professionals to familiarize them with the national strategy for women empowerment, indicators for measuring the status of women, and international indicators for women's empowerment and gender equality, in order to encourage media professionals to rely on evidence and indicators in their work. Furthermore, through data and policy papers, the Observatory helps provide media professionals with documented information that can be used in preparing media content, whether in traditional or social media.

■ **Development partners**

Many international organizations are implementing development projects in Egypt. The Egypt National Observatory for Women is one of the most important sources of data that these organizations rely on in identifying gaps and planning projects that address those gaps, as well as in monitoring and evaluating those projects. The Observatory is increasingly important to these



organizations in projects related to women's empowerment and gender equality.

■ **Researchers in the field of women's empowerment**

The Egypt National Observatory for Women presents a unique opportunity for researchers in the areas of women's empowerment. That is, not only through the available information and indicators, but also through survey data conducted by the Observatory, which allows researchers to use it while adhering to the controls and ethics of scientific research. With the scarcity of such data in the Arab world, the Observatory is a pioneer in making recent survey data that focuses on women's empowerment available to researchers and gives them the opportunity to analyze it in a deeper way that helps explain phenomena and build new social theories.

9- Regional Cooperation

Egypt National Observatory for Women participated with many countries, the most important of which are the following:

- A delegation from Jordan visited Baseera Center to learn about the experience of the ENOW before starting to prepare the Women's Observatory in Jordan. During the visit, the stages of preparing the ENOW and its work methodology were presented.
- Baseera Center presented the ENOW website at the Regional Forum for Data and Community Development, which was held



for the first time in the Emirate of Sharjah, United Arab Emirates, on October 9 and 10, 2024. The forum represents a regional event that brings together those interested and specialized in the field of data from various sectors and fields, to discuss, exchange and enhance the use of data in serving society and achieving sustainable development goals.

- During the visit of a delegation from the Ministry of Women in Djibouti to the National Council for Women in Egypt in July 2024, Baseera Center presented the ENOW in the meeting held with the Djiboutian delegation, where the stages of preparing the observatory, its components, and its working mechanism were presented.
- In August 2024, Baseera Center presented the website of the Egyptian Women Observatory in a meeting held by Baseera Center with the Royal Academy of Administration in the Sultanate of Oman.
- The Egyptian Women Observatory was presented by Baseera center in the training course held by the Middle East Center for Economics and Finance (CEF) on enhancing economic opportunities for women in the Middle East and North Africa region. The training was attended by 36 representatives of governments and international bodies in 13 countries including Morocco, Tunisia, Algeria, Lebanon, Jordan, Palestine, and Egypt.



10- Challenges

▪ Data availability and accuracy

Although Egypt has witnessed advancements in technology use in terms of data production and storage, which has resulted in a large number of databases that can be used to evaluate the impact of women's empowerment efforts in Egypt, this data is not always publicly available and accessible, in timely manner, for study and analysis, which constitutes a major challenge for researchers and decision makers.

In addition, many databases suffer from incomplete or incorrect recordings, which leads to the inaccurate calculation of indicators.

▪ Sustainability and independence

The Observatory's sustainability requires sufficient and regular financial resources to manage, update and develop it, especially in light of rapid technological development. To ensure the independence of the Observatory, these financial resources must be available from non-governmental sources. In this context, it is proposed to provide financial resources through international organizations and social responsibility activities of the private sector.



■ Technology

Keeping the Egypt National Observatory for Women website abreast of rapid technological advancements requires great efforts. It also requires purchasing the right to use new programs and display systems, and training the Observatory team to use them, which in turn requires financial resources.

■ Human resources

Managing and updating ENOW requires specialized personnel in statistics, economics, gender, and information technology, the regular availability of which is difficult to ensure considering the lack of financial resources.

11- Opportunities

■ Political will

The success of any monitoring and evaluation mechanism requires a real political will to ensure the achievement of the strategy's objectives. The interest of the Egyptian administration, represented by the President of the Republic, as well as the main actors, led by the National Council for Women, in empowering Egyptian women is a great opportunity to develop and expand the work of the Observatory, particularly as pertains to bridging the information gap related to women's empowerment, and



supporting decision-makers through the various outputs of the Observatory.

■ **Increasing need for data**

With the world entering a new development phase after the announcement of the Sustainable Development Goals, and Egypt's commitment to these goals, in addition to those of many national strategies, the need for data has become more urgent. This places ENOW at the top of the data sources that can be relied upon in monitoring and evaluation, as the data it provides is not limited to women's indicators, but rather extends to SDG indicators and a group of other indicators that may have an impact on various development issues.

■ **Big data**

Big data represents a great opportunity to provide data from non-traditional sources with higher frequency and potentially at a lower cost. The huge data available from various sources can be used in monitoring and evaluation processes related to the implementation of the National Strategy for Women Empowerment. However, there are many limitations that must be taken into consideration when using big data to provide indicators about women's empowerment. The use of this data has its challenges that require further research and efforts to overcome.



12- Next steps

With the increasing need for data and information to empower women, the Observatory team, in consultation with the National Council for Women and other development partners, formulated an ambitious plan to maximize the benefits of the Observatory. However, implementing this plan requires providing sufficient budgets. The plan includes the following:

▪ Observatory governance

The Observatory's governance requires creating a supreme advisory committee that includes a number of experts in different fields. This committee works to review the Observatory's work plans, ensure its integrity and transparency, review the list of sources on which it relies, and determine the research needs that the Observatory is required to fulfill.

▪ Developing the observatory's portal

The Women's Observatory was launched in 2017. With the great advancements that the world has witnessed in recent years, it has become necessary to take advantage of modern technology in displaying data, documenting indicators, and generating reports on indicators automatically using dedicated programs in addition to employing artificial intelligence. The Observatory seeks to achieve these goals in the coming years.



■ **More surveys and opinion polls**

ENOW bridges the information gap related to Egyptian women's empowerment, which requires conducting more surveys and opinion polls to provide the required data. The plan for future surveys and opinion polls includes topics of social norms related to women's empowerment, women's opportunities in the private sector, green economy, women in media, among other themes.

■ **More indicators**

With the expansion of the Observatory's work, interaction with various data-producing entities through which indicators (classified by gender) can be calculated has increased. This gives the Observatory an unprecedented opportunity to provide more indicators by using the data available to the various aforementioned entities. This requires developing a joint mechanism with these parties to meet their different needs and to ensure the continued availability of the data. The data in question can be described as follows:

● **Big data**

In the coming period, the Egypt National Observatory for Women plans to employ big data technologies to produce women's empowerment and gender equality indicators with greater frequency and at a lower cost. This requires the development of new methodologies to calculate traditional or new indicators that



suit the nature of the available data and reflect the situation of Egyptian women. For more information on this matter, please refer to the paper “Using Big Data to Provide Indicators on Women’s Empowerment,” which was prepared under the umbrella of the Observatory.

• **Administrative data**

Administrative data can be an important source of indicators disaggregated by sex. The Observatory can begin coordination with different ministries to calculate the required indicators from their data. For more information on this matter, please refer to the paper “Using Administrative Data to Produce Sex-Disaggregated Indicators” prepared under the umbrella of the Observatory.

▪ **Deeper data analysis**

The Observatory has developed full data sets for a large number of surveys and opinion polls. The latter have been used in producing several policy papers and infographics. The Egypt National Observatory for Women is the first such entity that collects data and develops methodologies to quantitatively measure social phenomena related to women's empowerment, in addition to launching indicators to measure these phenomena's development. The availability of this data provides opportunities to conduct in-depth analysis and develop statistical models to explain various phenomena.



Appendix:

Stages of Establishing

“Egypt National Observatory for Women” Website

The creation of the Egyptian Women’s Observatory’s website went through several stages, which are summarized below:

1. Identify and analyze requirements

At this stage, the Observatory’s team defined the objectives of the website and developed a general framework to make it user-friendly and facilitate access to the various indicators and publications available.

Different programming languages were reviewed and the back-end programming language ASP.net was chosen as the most appropriate at this time to meet the Observatory’s needs.

2. Website design

The user interfaces and user experience (UI/UX) were designed at this stage. The team designed the user interfaces and developed electronic drawings and diagrams for the desired appearance of the site, then the colors, fonts, logo, and the way the page elements flowed and navigation menus between the pages were chosen.

3. Database design

The information systems team prepared a database using Microsoft SQL server that can store large numbers of data and display it as follows:



- Tables
- Statistical graphs
- Comparing indicators (by years, regions, and governorates)
- The ability to search for indicators easily.

4. Website programming

After completing the previous stages, the web programming stage began, where work was done on the front and back ends of the site simultaneously. Then, the front-end code was separated from the back-end, for ease of maintenance and development in the future and to reduce errors.

Front-end programming initially relied on implementing design diagrams that were developed on professional programs such as Adobe XD, to convert them to HTML pages Supported by CSS layout sheets, so browsers can display the user interface with the same appearance defined by these layouts.

The back-end programmer wrote the code to deal with user requirements (communication with the front end), and code modules for communication with the required database, or other services on the hosting server.

5. Preparing website content

The content of the website was prepared in parallel with the programming process, and after the design process. The Observatory's team identified the pages that the website would contain and conducted a study of what was available to place on each page, as well as identifying



the data sources from which the indicators would be calculated. After that, indicators were calculated and revised, and documentation for each indicator was prepared.

6. Website testing

The back-end and front-end codes were tested separately at first to ensure their correct operation, and integration tests were conducted between the two interfaces to ensure their ability to communicate properly without errors.

7. Publish the website on the Internet

At this stage, the website was published, through the following steps:

- An appropriate hosting server capable of handling and implementing the site code was chosen,
- A suitable hosting plan has been chosen that includes sufficient space and unlimited data transmission volume,
- Transferring the code files and content to the space designated for the website under the address <https://www.enow.gov.eg>
- Adjusting other settings related to databases, code execution method, and security certificates.

8. Updating the Observatory website

The website of the Observatory is updated periodically, adding the latest values for the available indicators. The site is also updated if a new study is issued under the umbrella of the Observatory. This process is often carried out and self-funded by Baseera Centre.

Egypt national Observatory for Women
WWW.enow.gov.eg